

---

# Upper Housatonic Heritage Walks '03



---

Saturday and Sunday,  
October 4 and 5, 2003

---



---

38  
Guided Hikes Through  
the Upper Housatonic  
River Valley

---

**The Bicycle Tour Company**  
[bicycletours.com](http://bicycletours.com)  
1-888-711-KENT



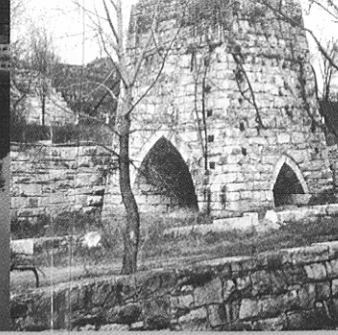
Dalton/Hinsdale Greenway  
Photo: Dennis Regan



Sharon Valley Kiln



Bulls Bridge, Kent, CT



Beckley Furnace,  
East Caanan, CT



Housatonic River Walk in Great  
Barrington, MA. Photo: Rachel Fletcher

## ABOUT THE UPPER HOUSATONIC HERITAGE AREA

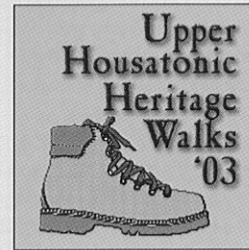
"A region not surpassed in picturesque loveliness – by any area in New England, and perhaps, not in all the world." William Cullen Bryant, *Picturesque America*

The proposed Upper Housatonic Valley Heritage Area is the watershed of the upper Housatonic River, extending 60 miles from Kent, Connecticut to Lanesboro, Massachusetts and includes nine towns in Connecticut and 20 in Massachusetts. The Berkshire and Litchfield Hills that bound the watershed have helped shape a distinct regional culture and provide natural borders for the proposed heritage area.

At the direction of Congress, the National Park Service completed a study of our area and determined that we qualify to be designated as a National Heritage Area. Authorization bills are presently before Congressional committees.

Qualification rested on the rich and nationally significant natural, cultural and historical heritage of the area, and on the desire of our citizens to receive this honor. Designation will bring significant economic benefits to the area. Your participation on the walks is helping us demonstrate public support for the area. Thank you!

A Heritage Area is a part of our country that has been recognized by the United States Congress for its unique contribution to the American experience. They are "living landscapes" where residents have formed partnerships with government to celebrate their heritage and conserve irreplaceable natural and cultural resources. These areas recognize the impact of history in the evolving landscape and understand that the goals of conservation and economic development are interrelated.



### Corporate Sponsors

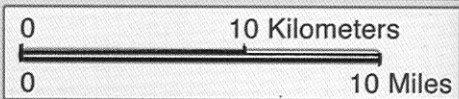


Housatonic Heritage expresses its sincerest thanks to the walk leaders and the following sponsoring organizations for their support of this program:

- The Berkshire Athenæum
- Berkshire County Historical Society
- Berkshire Natural Resources Council
- Berkshire Taconic Landscape Program, The Nature Conservancy
- Berkshire Wildlife Sanctuaries of the Massachusetts Audubon Society
- Bidwell House Museum
- Connecticut Antique Machinery Association
- Edith Wharton Restoration, Inc.
- Egremont Historical Commission
- Foggy River Farm
- Frelinghuysen-Morris House and Studio
- Great Barrington Historical Commission
- Great Barrington Historical Society
- Great Barrington Land Conservancy
- Great Barrington Land Trust
- Hancock Shaker Village
- Housatonic Heritage
- Housatonic River Commission
- Housatonic River Walk
- Housatonic Valley Association
- Hunt Hill Farm
- Kent Historical Society
- Lee Historical Commission
- Massachusetts Riverways Program, Department of Fisheries, Wildlife and Environmental Law-Enforcement
- New Marlboro Historical Society
- Retired & Senior Volunteer Program of Berkshire County
- Richmond Historical Commission
- Salisbury Land Trust
- Sharon Historical Society
- Sheffield Historical Society
- The Trustees of Reservations
- The Trustees of Reservations Highland Communities Initiative



Upper  
Housatonic  
Heritage  
Walks  
'03



Upper Housatonic  
National Heritage Area